



Conferences & Events





aliathon

RESORT

PAPHOS - CYPRUS



Aliathon Resort Conferences & Events

Aliathon is an ideal venue for corporate meetings, incentives, conferences and exhibitions as it can accommodate the needs of all conference delegates who wish to combine business and pleasure. Magnificent surroundings and stylish furnishings ensure that delegates are able to work in comfort.

Like every other aspect of the Aliathon, attention to detail is paramount, providing the best state-of-the-art facilities, highly trained professionals and a magnificent, relaxed, self-contained setting.




The Aliathon's main event venue - The Aphrodite Hall - can be used to accommodate approximately 1000 delegates theatre style or for smaller groups. The Multifunction Centre consists of 9 fully equipped conference/breakout rooms. A range of other venues are also available with a total of 20 multifunction rooms at the Aliathon.

The Aliathon's catering services can be tailored to your needs, offering coffee breaks, meals and cocktail receptions as required. In terms of technical equipment and support, all the latest audiovisual equipment can be arranged.

The Aliathon Team is on hand to take care of your requirements and would be delighted to offer you a tailor made quotation for your event.

aliathonresort.com

Aliathon MICE Venues

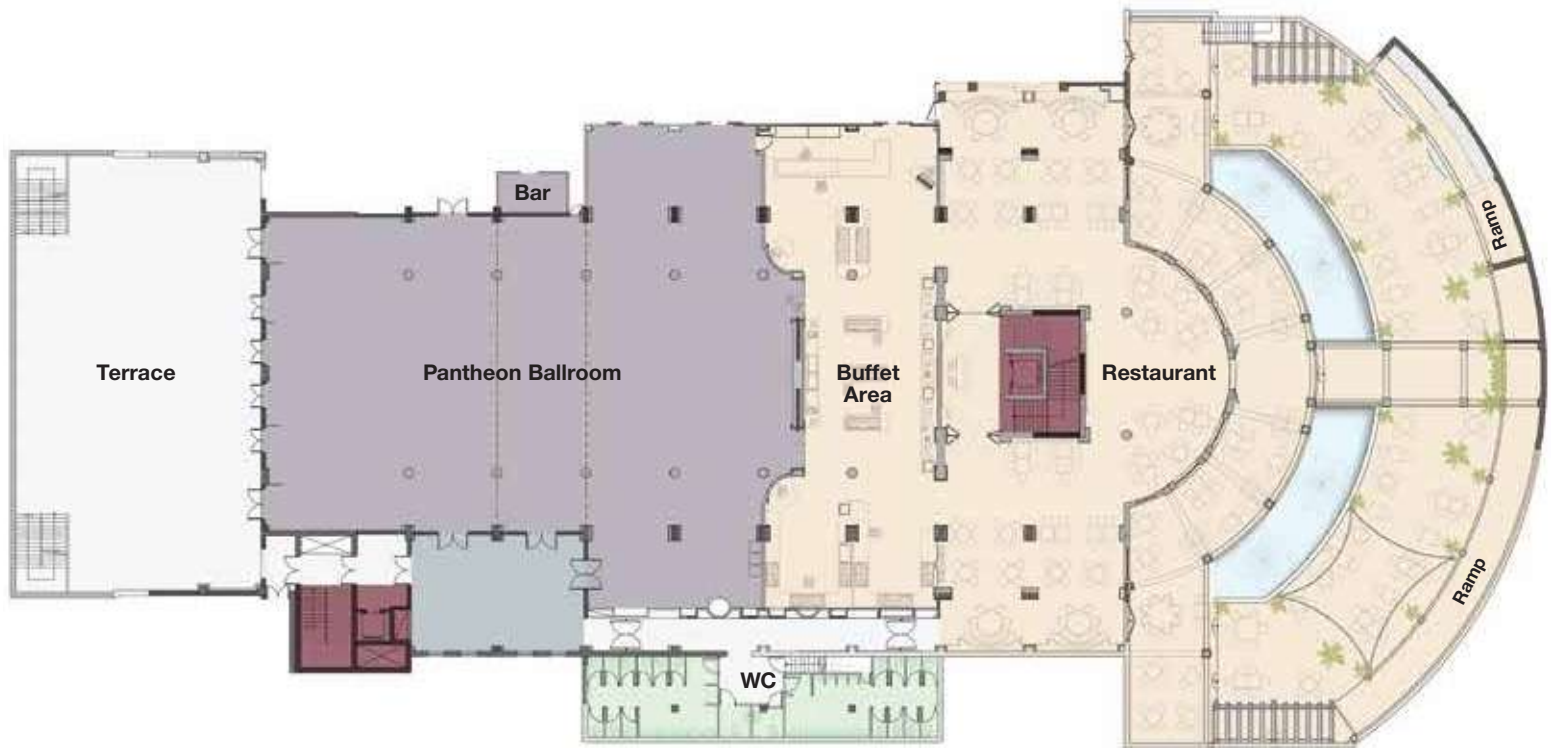
MULTIFUNCTION CENTRE VENUES	SCREEN/PROJECTOR	SOUND SYSTEM	DAY LIGHT	Dimensions				Capacity						
				SQM	HEIGHT	LENGTH	WIDTH	THEATRE	CLASSROOM	U-SHAPE	BOARD	BANQ	COCKTAIL	CABARET
APHRODITE HALL	Y	Y	Y	1056	9.1 & 4.5	32	33	1000	450	N/A	N/A	550	700	385
PANTHEON BALLROOM	Y	N	Y	608	4	32	19	680	265	93*	N/A	300	500	210
PANTHEON BALLROOM A	Y	N	Y	360	4	19	19	380	144	51*	N/A	180	300	126
PANTHEON BALLROOM B	N	N	N	370	4	13	29	300	120	42*	N/A	120	200	84
ADONIS	Y	Y	Y	166	4	17.3	9.6	192	84	50	42	90	N/A	63
ZEUS	Y	Y	Y	150	2.7	21	7	150	90	51	48	90	N/A	63
ARTEMIS A & B	Y	N	Y	105	3.5	14.7	7.1	90	42	36	36	60	N/A	35
ARTEMIS A	Y	N	Y	66	3.5	9	7.1	60	24	18	18	30	N/A	21
ARTEMIS B	N	N	Y	41	3.5	5.8	7.1	30	18	18	18	N/A	N/A	N/A
APOLLON	Y	N	Y	60	3	10.6	5.7	60	27	24	24	N/A	N/A	N/A
POSEIDON	Y	N	Y	60	3	10.6	5.7	60	27	24	24	N/A	N/A	N/A
ERMIS	N	N	Y	50	2.7	10	5	36	18	18	12	N/A	N/A	N/A
APHRODITE GARDENS**	N	N	N	-	N/A	-	-	N/A	N/A	N/A	N/A	N/A	500	N/A
OTHER VENUES														
ADULTS BAR	N	N	Y	78	4.2	14.2	5.5	80	48	36	30	40	100	28
GREEK RESTAURANT	N	N	Y	66	3.2	12	5.5	64	42	30	24	40	84	28
AEGEON RESTAURANT	N	N	Y	130	2.95	13	10	150	72	30	24	90	140	35
ITALIAN RESTAURANT	N	N	Y	83	2.8	8.5	9.8	60	36	24	24	50	70	35
CYPRIOIT TAVERNA A	N	N	Y	64	3.5	7.5	8.5	84	60	45	42	70	80	49
CYPRIOIT TAVERNA B	N	N	Y	67	3.1	15.5	4.3	60	36	27	18	50	60	35
MEXICAN RESTAURANT	N	N	Y	46	2.9	6.4	7.2	36	18	18	12	N/A	N/A	N/A
BURGER & GRILL HOUSE	N	N	Y	47	3.1	12	3.9	54	36	27	24	30	60	21
INDIAN RESTAURANT	N	N	Y	-	-	-	-	42	30	21	18	50	70	35
TIME TO SMILE ROOM	N	N	Y	59	2.9	14	4.2	40	24	N/A	36	N/A	N/A	N/A
KARNAYIO SQUARE**	N	N	Y	150	N/A	10	15	N/A	N/A	N/A	N/A	200	600	N/A
OUTDOOR ENTERTAINMENT**	Y	Y	Y	720	N/A	30	24	N/A	N/A	N/A	N/A	300	600	N/A
ALIAS BOARD ROOM	N	N	Y	14	2.7	4.2	3.3	N/A	N/A	12	12	N/A	N/A	N/A

NOTE: DIMENSIONS ARE APPROXIMATE IN METRES

* IT ALSO POSSIBLE TO HAVE SMALLER MULTIPLE U-SHAPE TABLES IN THIS VENUE

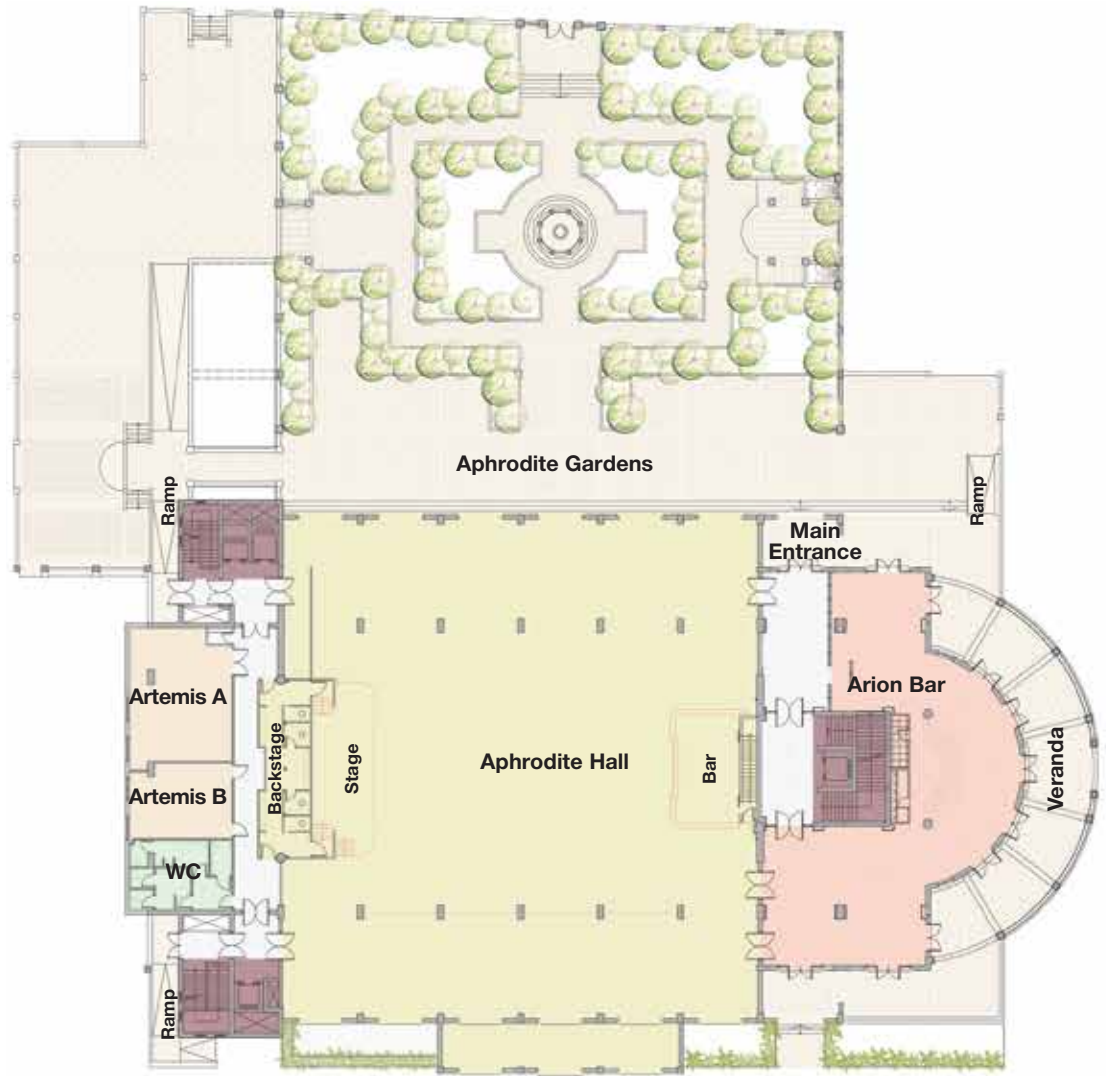
** THESE VENUES ARE LOCATED OUTSIDE

Basement



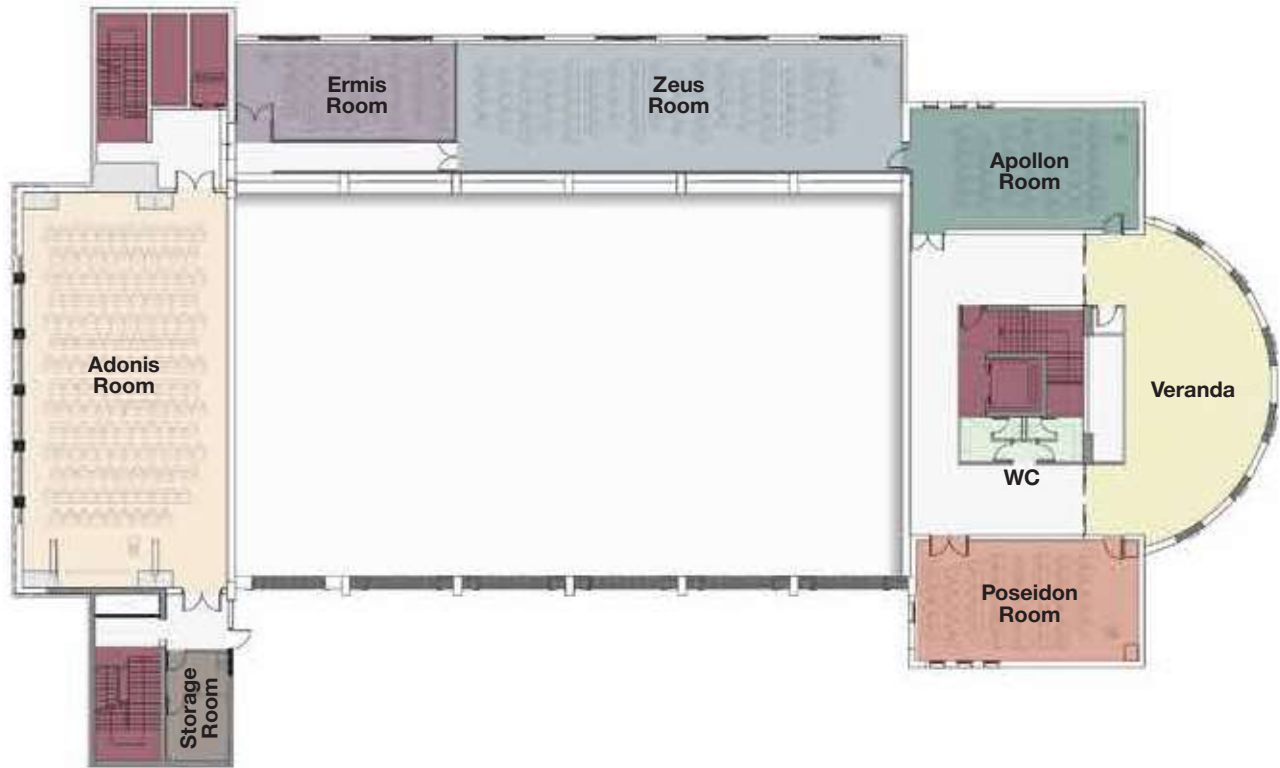
-  Pantheon Restaurant
-  Lift & Stairway
-  WC
-  Pantheon Ballroom
-  Foyer

Ground floor



-  Aphrodite Hall
-  Lift & Stairway
-  WC
-  Artemis (A & B)
-  Arion Bar

1st floor



-  Poseidon Room
-  Apollon Room
-  Ermis Room
-  Zeus Room
-  Adonis Room
-  Lift & Stairway
-  WC
-  Storage Room
-  Veranda



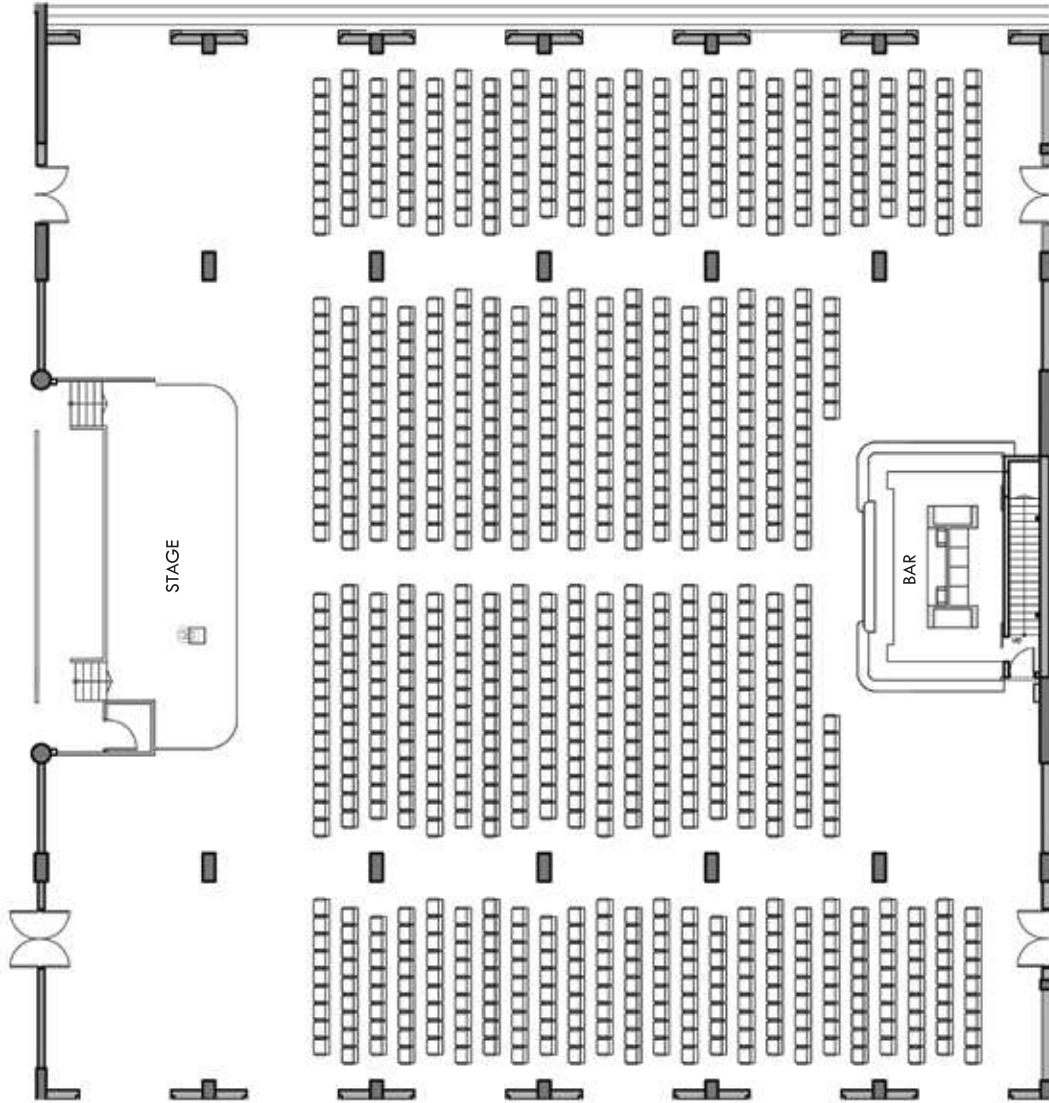
Aphrodite Hall





Conferences & Events

Ground floor



MULTIFUNCTION CENTRE VENUES	SCREEN/ PROJECTOR	SOUND SYSTEM	DAY LIGHT	Dimensions				Capacity						
				SQM	HEIGHT	LENGTH	WIDTH	THEATRE	CLASSROOM	U-SHAPE	BOARD	BANQ	COCKTAIL	CABARET
APHRODITE HALL	Y	Y	Y	1056	9.1 & 4.5	32	33	1000	450	N/A	N/A	550	700	385
APHRODITE GARDENS**	N	N	N	-	N/A	-	-	N/A	N/A	N/A	N/A	N/A	500	N/A

NOTE: DIMENSIONS ARE APPROXIMATE IN METRES
 ** VENUE LOCATED OUTSIDE



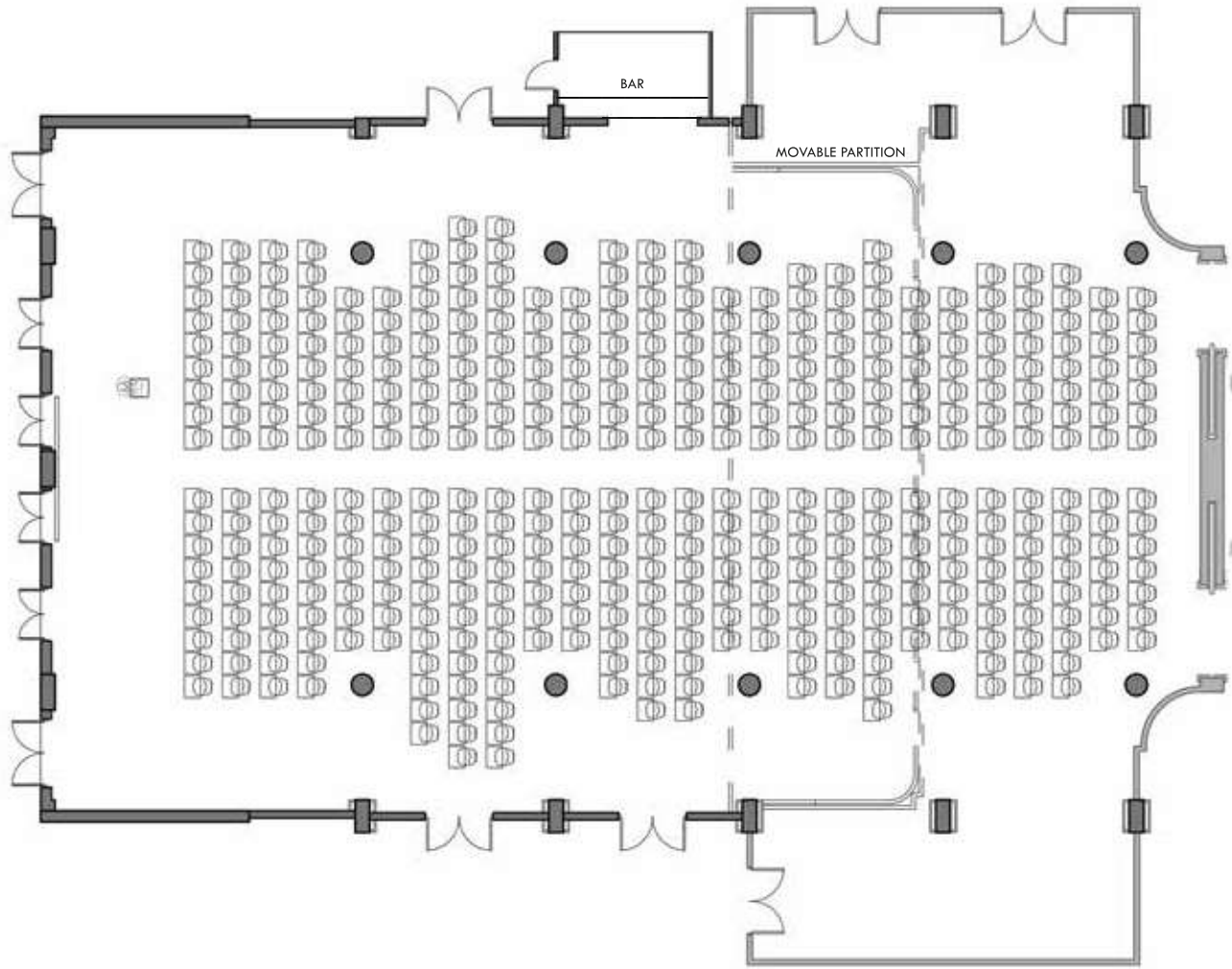
Pantheon Ballroom





Conferences & Events

Basement



MULTIFUNCTION CENTRE VENUES	SCREEN/PROJECTOR	SOUND SYSTEM	DAY LIGHT	Dimensions				Capacity						
				SQM	HEIGHT	LENGTH	WIDTH	THEATRE	CLASSROOM	U-SHAPE	BOARD	BANQ	COCKTAIL	CABARET
PANTHEON BALLROOM	Y	N	Y	608	4	32	19	680	265	93*	N/A	300	500	210
PANTHEON BALLROOM A	Y	N	Y	360	4	19	19	380	144	51*	N/A	180	300	126
PANTHEON BALLROOM B	N	N	N	370	4	13	29	300	120	42*	N/A	120	200	84



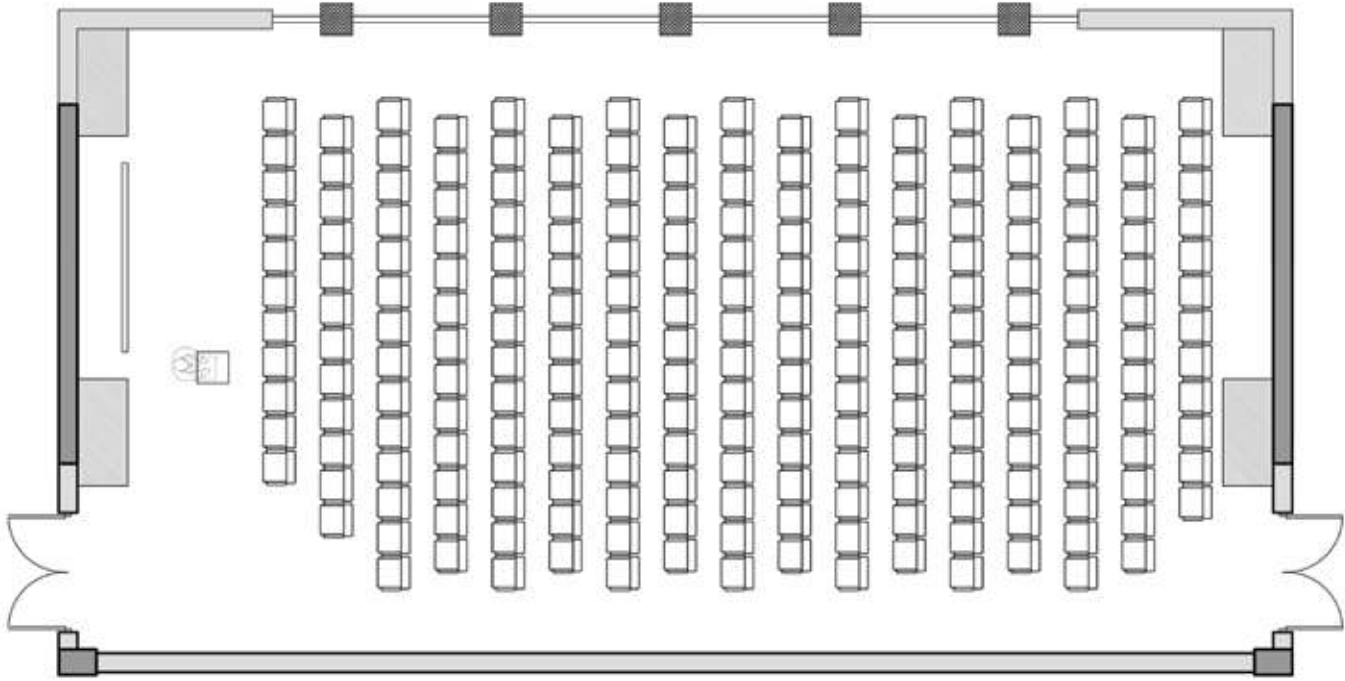
Adonis





Conferences & Events

1st floor



MULTIFUNCTION CENTRE VENUES	SCREEN/PROJECTOR	SOUND SYSTEM	DAY LIGHT	Dimensions				Capacity						
				SQM	HEIGHT	LENGTH	WIDTH	THEATRE	CLASSROOM	U-SHAPE	BOARD	BANQ	COCKTAIL	CABARET
ADONIS	Y	Y	Y	166	4	17.3	9.6	192	84	50	42	90	N/A	63



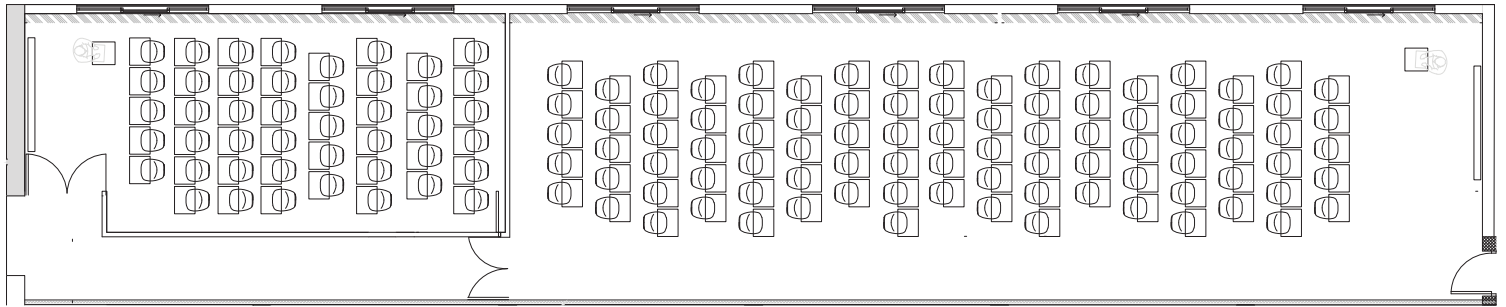
Zeus & Ermis





Conferences & Events

1st floor



MULTIFUNCTION CENTRE VENUES	SCREEN/ PROJECTOR	SOUND SYSTEM	DAY LIGHT	Dimensions				Capacity						
				SQM	HEIGHT	LENGTH	WIDTH	THEATRE	CLASSROOM	U-SHAPE	BOARD	BANQ	COCKTAIL	CABARET
ZEUS	Y	Y	Y	150	2.7	21	7	150	90	51	48	90	N/A	63
ERMIS	N	N	Y	50	2.7	10	5	36	18	18	12	N/A	N/A	N/A

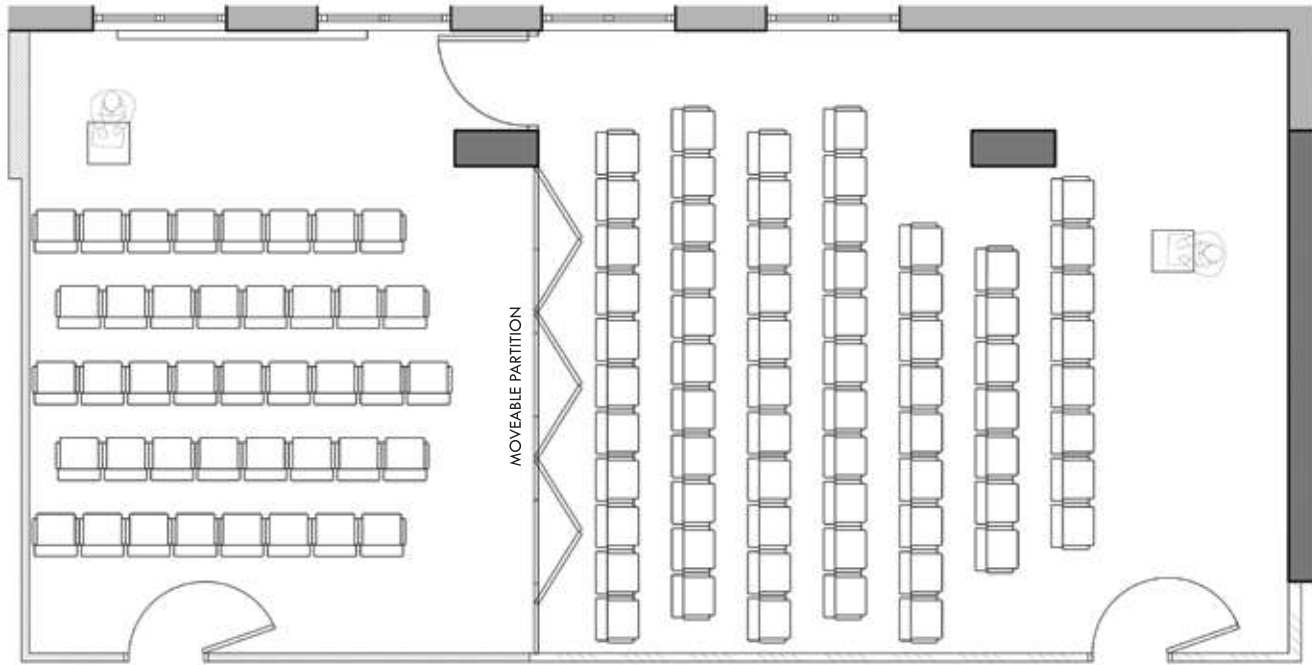


Artemis A & B





Ground floor



MULTIFUNCTION CENTRE VENUES	SCREEN/PROJECTOR	SOUND SYSTEM	DAY LIGHT	Dimensions				Capacity						
				SQM	HEIGHT	LENGTH	WIDTH	THEATRE	CLASSROOM	U-SHAPE	BOARD	BANQ	COCKTAIL	CABARET
ARTEMIS A & B	Y	N	Y	105	3.5	14.7	7.1	90	42	36	36	60	N/A	35
ARTEMIS A	Y	N	Y	66	3.5	9	7.1	60	24	18	18	30	N/A	21
ARTEMIS B	N	N	Y	41	3.5	5.8	7.1	30	18	18	18	N/A	N/A	N/A



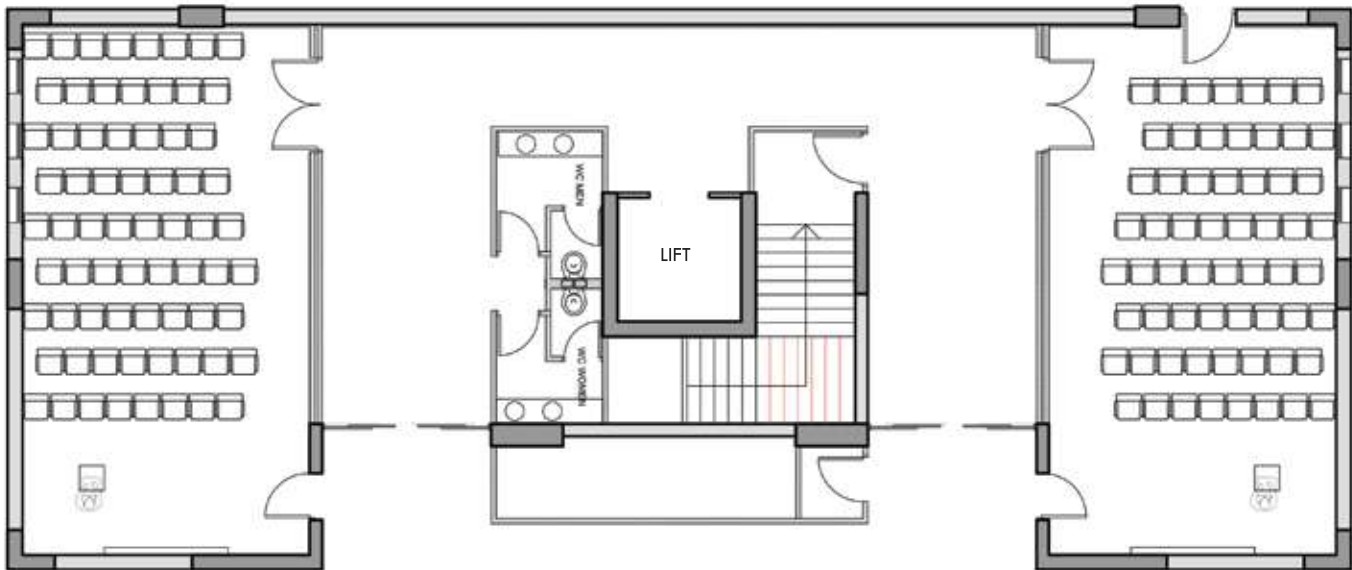
Apollon & Poseidon





Conferences & Events

1st floor



MULTIFUNCTION CENTRE VENUES	SCREEN/ PROJECTOR	SOUND SYSTEM	DAY LIGHT	Dimensions				Capacity						
				SQM	HEIGHT	LENGTH	WIDTH	THEATRE	CLASSROOM	U-SHAPE	BOARD	BANQ	COCKTAIL	CABARET
APOLLON	Y	N	Y	60	3	10.6	5.7	60	27	24	24	N/A	N/A	N/A
POSEIDON	Y	N	Y	60	3	10.6	5.7	60	27	24	24	N/A	N/A	N/A



Outdoor Entertainment



OTHER VENUES	SCREEN/ PROJECTOR	SOUND SYSTEM	DAY LIGHT	Dimensions				Capacity						
				SQM	HEIGHT	LENGTH	WIDTH	THEATRE	CLASSROOM	U-SHAPE	BOARD	BANQ	COCKTAIL	CABARET
OUTDOOR ENTERTAINMENT**	Y	Y	Y	720	N/A	30	24	N/A	N/A	N/A	N/A	300	600	N/A

NOTE: ** VENUE LOCATED OUTSIDE



Adults Bar



Greek Restaurant

OTHER VENUES	SCREEN/ PROJECTOR	SOUND SYSTEM	DAY LIGHT	Dimensions				Capacity						
				SQM	HEIGHT	LENGTH	WIDTH	THEATRE	CLASSROOM	U-SHAPE	BOARD	BANQ	COCKTAIL	CABARET
ADULTS BAR	N	N	Y	78	4.2	14.2	5.5	80	48	36	30	40	100	28
GREEK RESTAURANT	N	N	Y	66	3.2	12	5.5	64	42	30	24	40	84	28



Italian Restaurant



Cypriot Taverna

OTHER VENUES	SCREEN/ PROJECTOR	SOUND SYSTEM	DAY LIGHT	Dimensions				Capacity						
				SQM	HEIGHT	LENGTH	WIDTH	THEATRE	CLASSROOM	U-SHAPE	BOARD	BANQ	COCKTAIL	CABARET
ITALIAN RESTAURANT	N	N	Y	83	2.8	8.5	9.8	60	36	24	24	50	70	35
CYPRIT TAVERNA A	N	N	Y	64	3.5	7.5	8.5	84	60	45	42	70	80	49
CYPRIT TAVERNA B	N	N	Y	67	3.1	15.5	4.3	60	36	27	18	50	60	35



aliathon
RESORT
PAPHOS - CYPRUS

aliathonresort.com

aliathon

RESORT

PAPHOS - CYPRUS



3 Theas Aphrodites Avenue
Geroskipou 8201, P.O.Box 62303
8063 Paphos Cyprus
Tel.: +357 26964400 Fax: +357 26964700
e-mail: info@aliathonresort.com



aliathonresort.com